



Eastern Regional Partnership for Adult Education
(ERPAE)

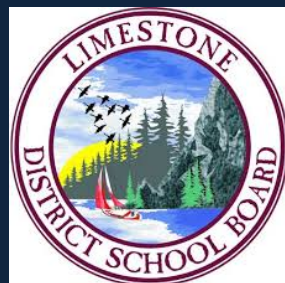
Innovative Pilot Projects: Improving Adult Learner Pathways

Dr. Lorraine Godden
&
Dr. Sandy Youmans

A Roundtable Presentation for Cannexus 2020



Who are the ERPAE members?



The ERPAAE AES project: What we did!

Phase 1 (2016-17)	Awareness	<ul style="list-style-type: none">• Creation of regional partnership• Environmental scan• Develop multi-year strategic plan
Phase 2 (2017-18)	Capacity Building	<ul style="list-style-type: none">• Learning from inside region• Learning from outside of region• Sharing and developing innovative best practices
Phase 3 (2018-19)	Execution	<ul style="list-style-type: none">• Implementation of best practices• Monitoring and evaluating implementation

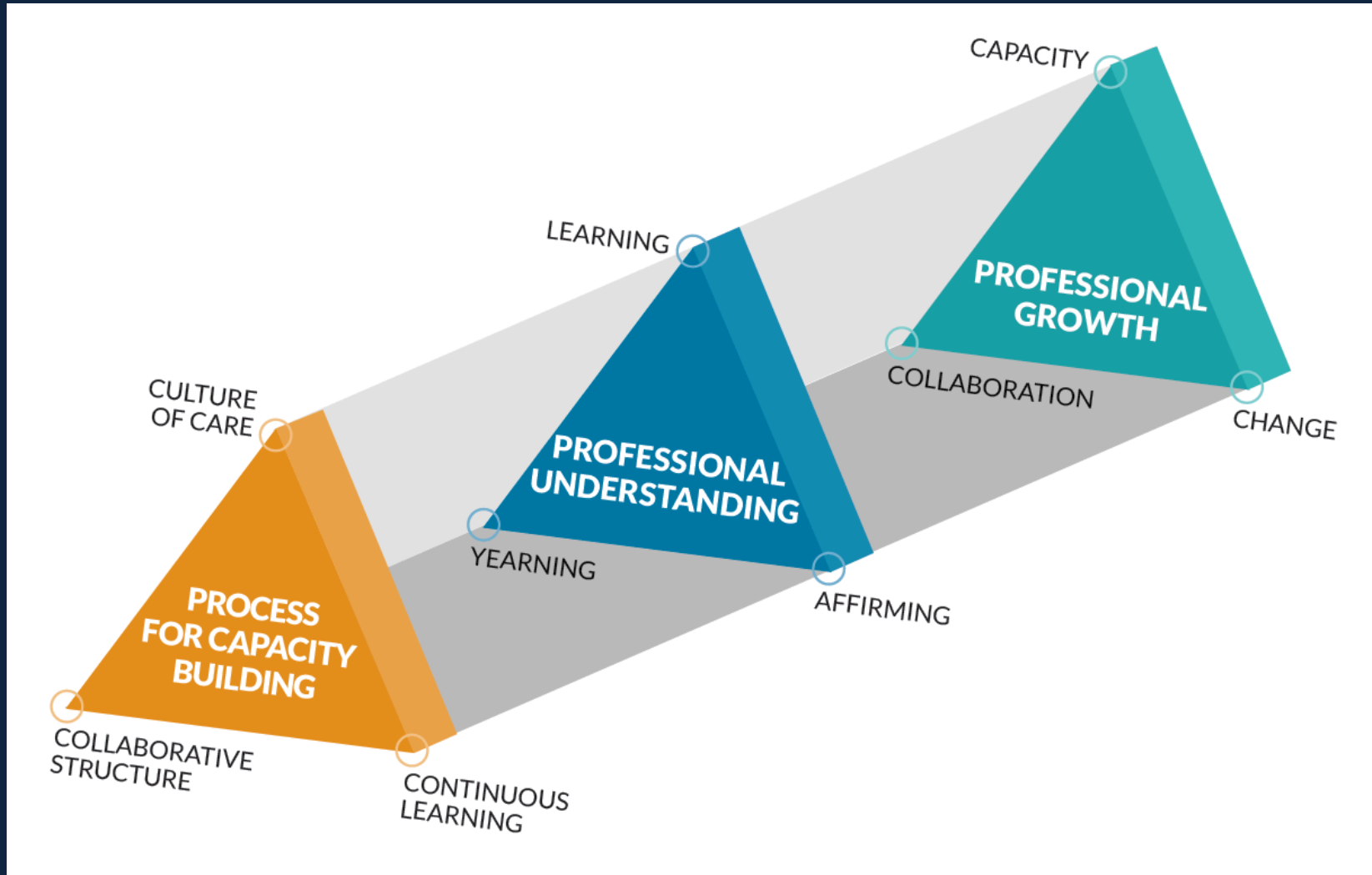
We learned from *Capacity Building* phase (year two)

- Process of capacity building
- Professional understanding
- Professional growth
- Six overarching themes



Collaborative Coalition Model for Professional Development

(Godden & Youmans, 2018)



ERP AE innovative pilot projects by mandate

BOARD	INTAKE, ASSESSMENT, AND REFERRAL	GUIDANCE AND PATHWAY PLANNING	PLAR	FLEXIBLE DELIVERY	POSITIONING OF ADULT EDUCATION
ALCDSB					
CDSBEO					
HPEDSB					
LDSB					
OCSB					
OCDSB					
RCDSB					
UCDSB					

Online intake, assessment, referral in AE: Successes & challenges

Scope and size
needs managing

Face-to-face role
vital

Implementing
course codes
currently
problematic

Challenge to include
Co-op, PLAR,
Correspondence,
Online courses

Timing of
implementation

Processing time has
improved

Succession planning
& training

Knowledge and
skills base

Role of Google Apps
for Education - data
collection and
analysis

Piloting documents to support guidance & pathway planning in AE: Execution successes & challenges

Consultation to research & create document

Digital copy for DSB, hard copy for student

Continuous evaluation and refinement through project

Students felt their needs and plans were clarified and understood

Plan allowed for "next steps" to be clarified

Concise overview of learner journey and role of stakeholders

Helps students to navigate complexity of programing

Students take ownership of learning

Sense of accomplishment

Reviewing PLAR in AE: Execution successes & challenges

3 out of 4 PLAR assessments now online	PLAR eligibility identified at registration	Now utilizing Senior PLAR to identify and recognize life experiences
Efficiency through tracking sheets	Promotional strategy	Student satisfaction with PLAR up from 83% to 92%
Greater communication about PLAR across staff	Recognizing diverse learners accomplishments	Create a planning team to regularly review and evaluate

Piloting flexible delivery of AE: Execution successes & challenges

Alternatives for recruitment and delivery

Essential to build relationships within DSB and community partners

Requires sufficient understanding of variety and usage of funding registers

“The right classroom space leads to success”

Targeted and purposeful outreach alongside appropriate marketing

Transportation remains most significant barrier

Adequate research of alternative locations

Mentoring to support new staff

Culture of care

(Re-)positioning AE: Execution successes & challenges

Revenue
generating

Utilizing DSB
staff

Word-of-
mouth

Social media
& website

Expanding
knowledge of
provision

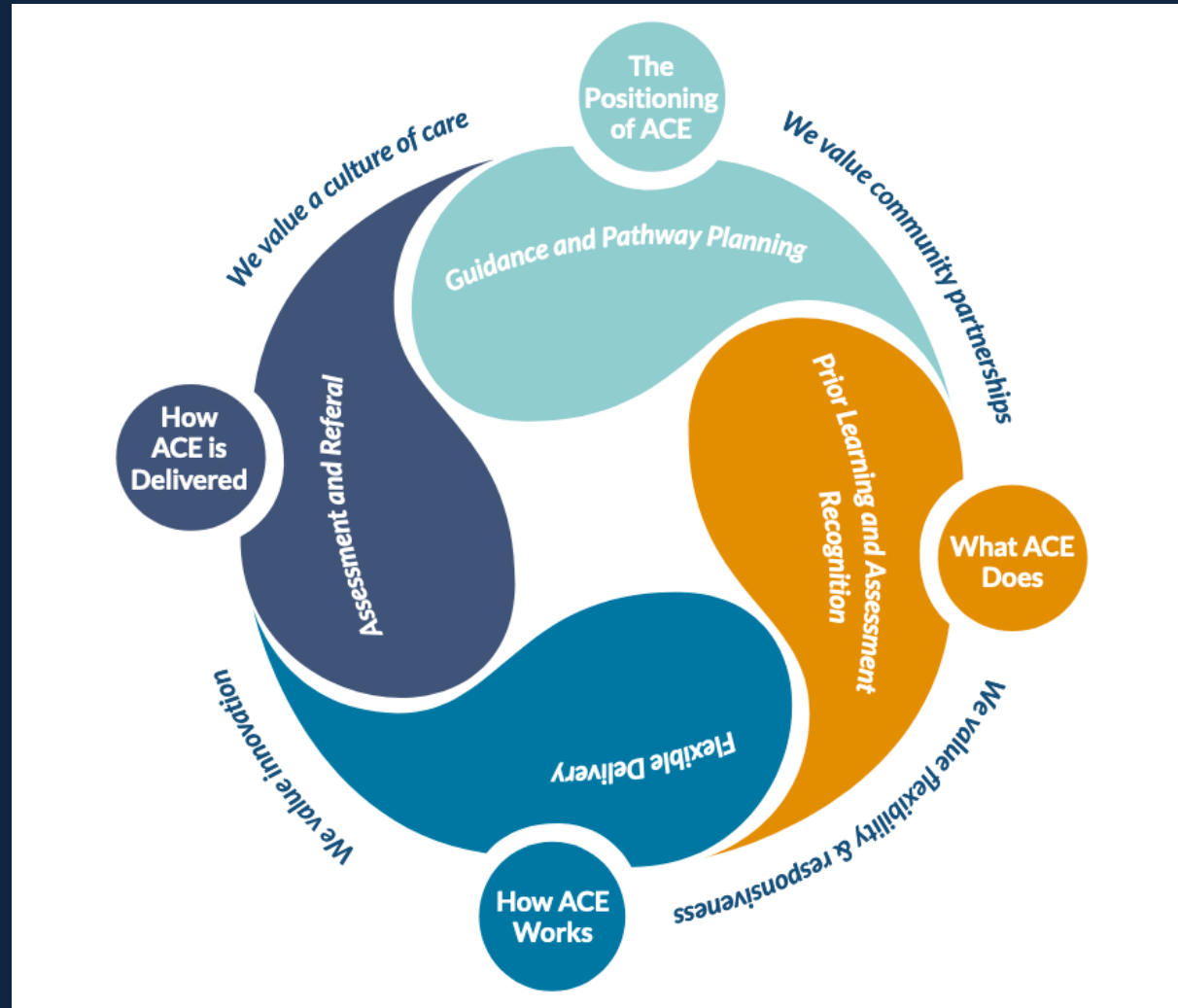
Sustainability

Marketing
expertise

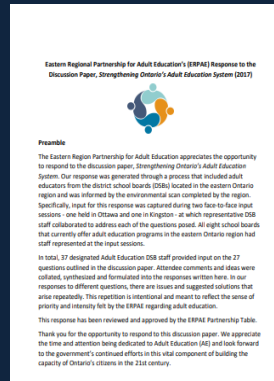
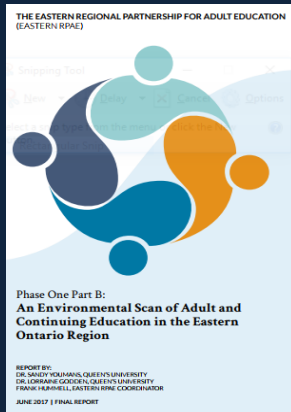
Wider public
awareness

Longitudinal
data
collection

A Visual Representation of ACE in the ERPAAE

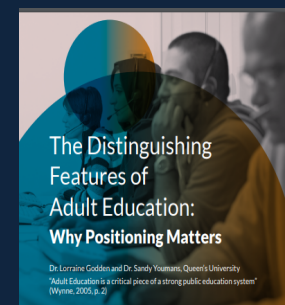
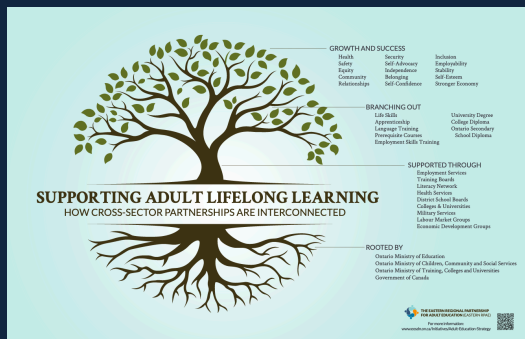
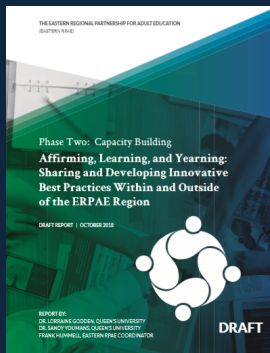


Sharing Our Work and Resources



*Environmental Scan,
Strategic Plan,
Monographs, Discussion
Paper Response, Capacity
Building Report, and
Cross-Sector Report
can be downloaded from:*

www.eosdn.on.ca/initiatives/adult-education-strategy



On behalf of the ERPAE, thank you for listening!



We welcome your questions!